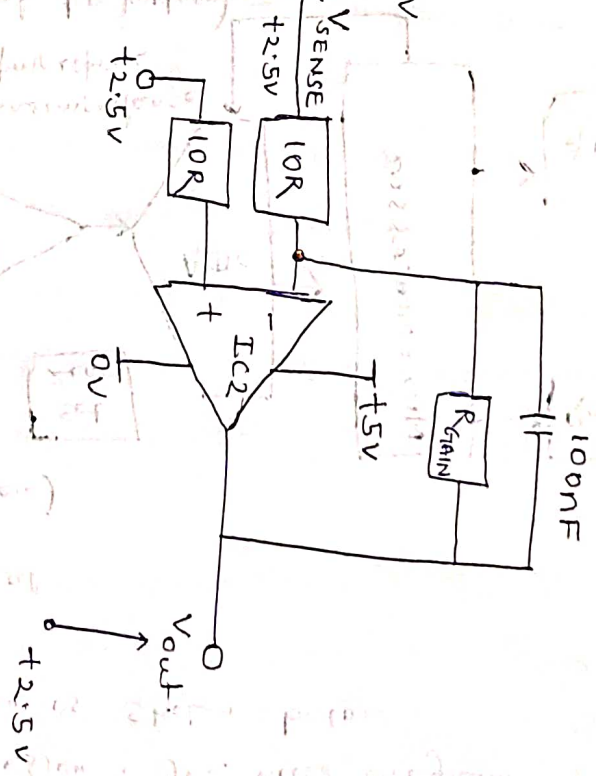
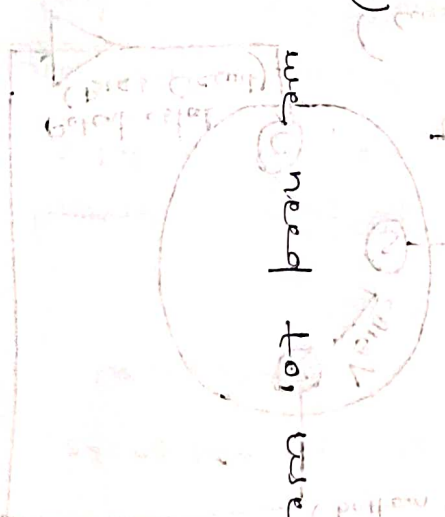


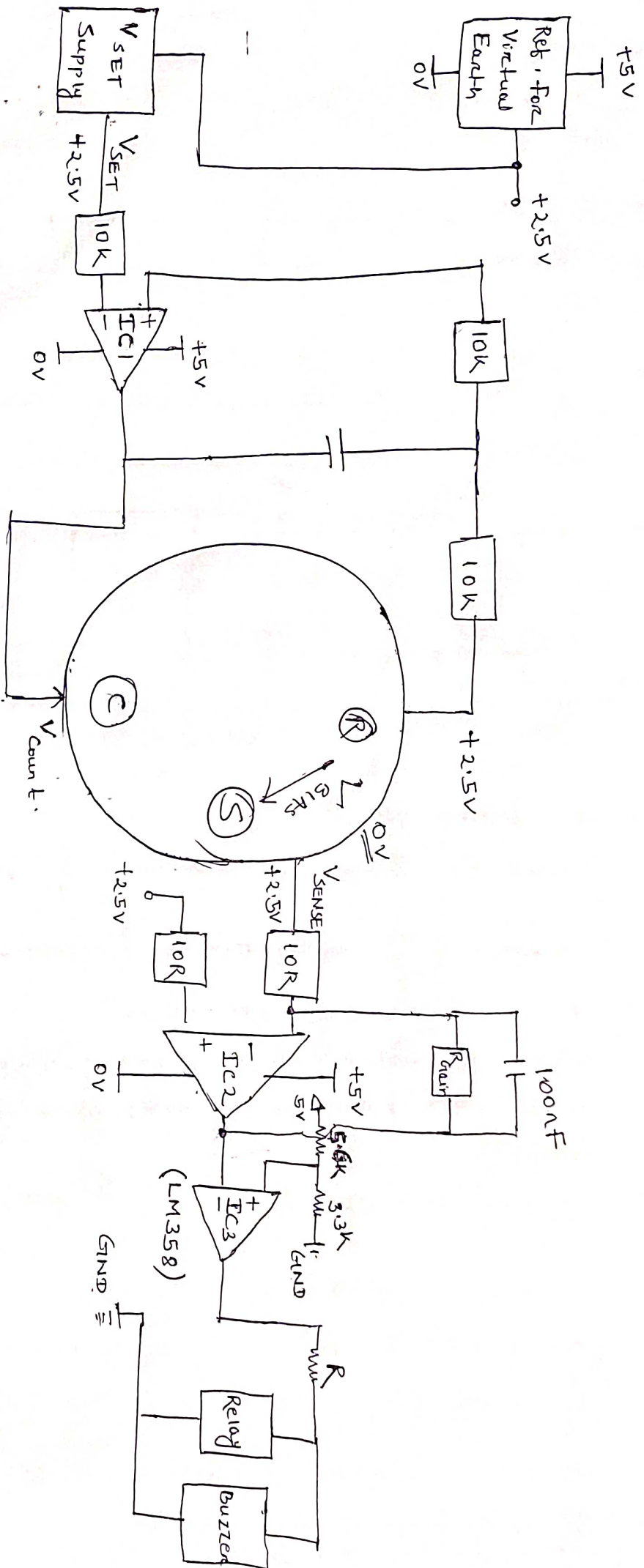
Block Diagram (1)

In the above block diagram after IC2 Controller to do Comparison.



we need to use ADC & micro-





IC1, IC2, IC3 are the LM358 OP-Amp.

Block Diagram (2)

To avoid the extra ADC & microcontroller unit we need to use an LM358 comparator to compare the output signal of trans impedance amplifier with a reference voltage.