

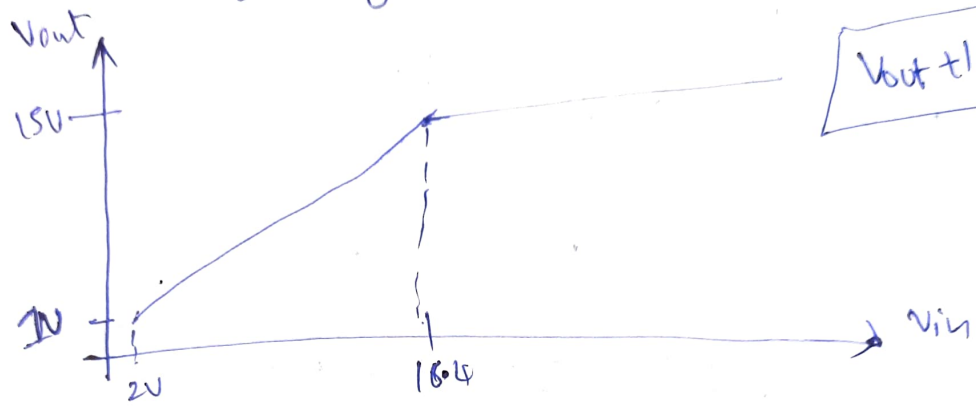
Q4) For board - X, we are using LP2980-ADJ

low dropout linear regulator.

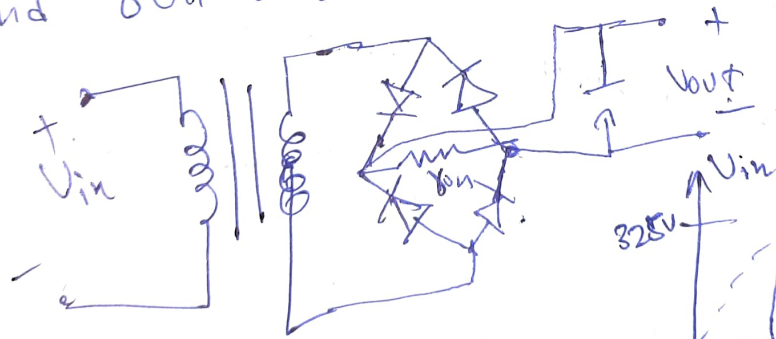
its input voltage = 16.4V

output voltage = 1.5V

we are getting input from PSU of board - Y

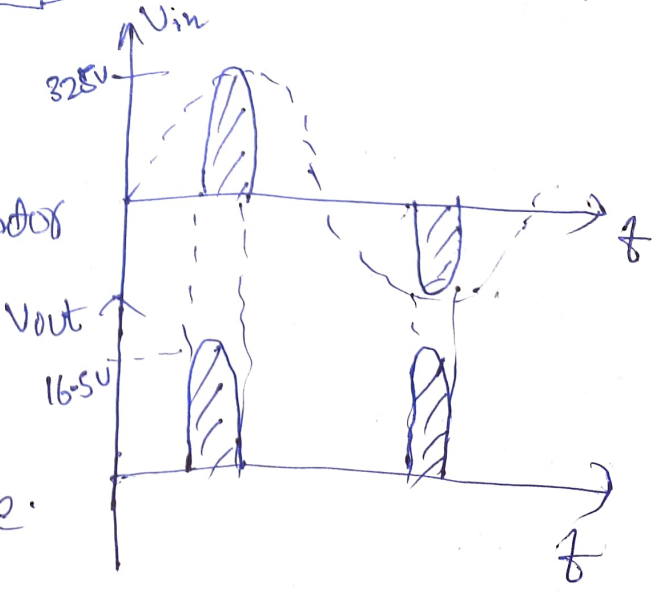


For board Y, we are ~~230~~<sup>230</sup> - 18V step down transformer and full bridge and capacitor of 100



For getting 1.5V, we use some resistor i.e. it, LP2980-ADJ

we also use, LDO regulator for smooth output voltage. and for protection Zener



Qs.) For Board - Z in control room.

We, use ~~the~~ the similar PSU like used in board - Y  
we will use, 230-18 step down transformer, full bridge rectifier  
and capacitors and a LM2980 - VDS LDO Regulator.

In Industries we can get voltage supplies from

230V to 600V, according to USA

∴ based on that, we need select the step down transformer